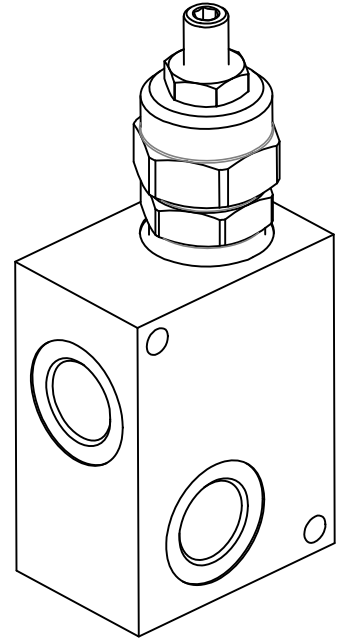
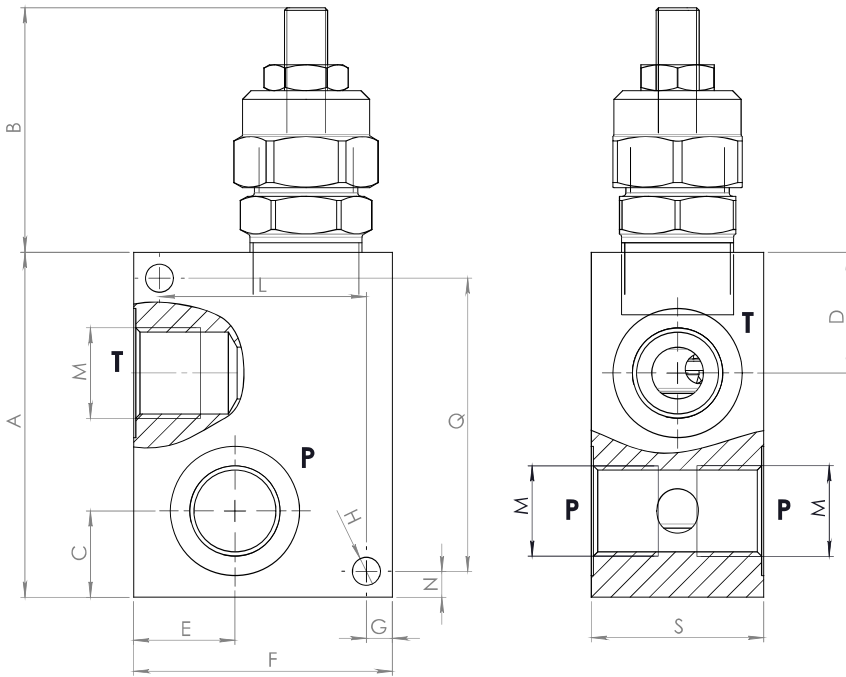
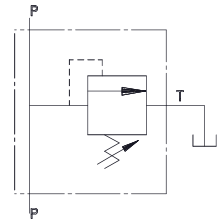


### Dimensions

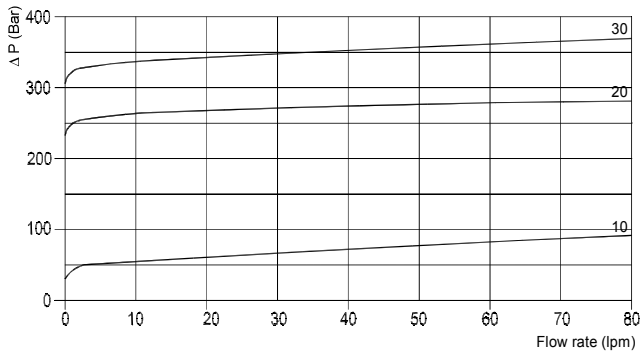


### Hydraulic Symbol



Size	A	B max	C	D	E	F	G	H	L	M BSP	N	Q	S	Weight kg
<b>03</b>	80	57	20	28	23,5	60	6	6,5	48	1/2	6	68	40	0,70
<b>04</b>	80	57	20	28	23,5	60	6	6,5	48	3/4	6	68	40	0,67

### Curves



### Features

<b>Rated Flow</b>	80 lpm
<b>Max Pressure</b>	350 bar

**Materials:** Zinc plated steel cartridge, hardened steel inner parts.  
Aluminium manifold.

### Ordering Code

**PRL 80**    --    --    -

Port Size BSP		Spring (bar)	
<b>03</b>	1/2	<b>10</b>	5-50
<b>04</b>	3/4	<b>20</b>	30-260
		<b>30</b>	130-350

Adjustments		
<b>A</b>		Socket Screw
<b>B</b>		Handknob
<b>C</b>		Tamperproof Cap

**Ordering Code Example:** PRL800420A = 3/4 Port Size - 30-260 bar setting range, Socket screw adjustment.